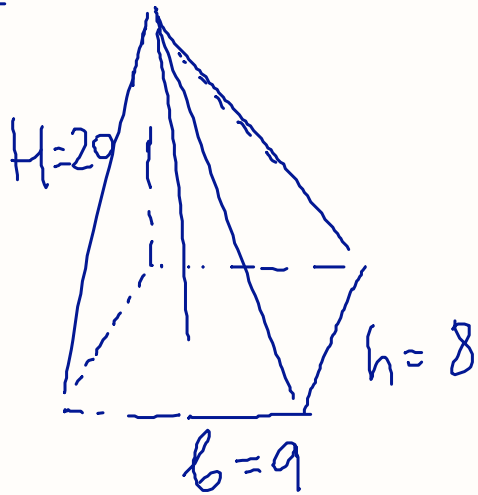


$$V = \frac{1}{3} \cdot 36 \cdot 20 = \frac{720}{3} \\ = 240 \text{ cm}^3$$

$$A = \frac{b \cdot h}{2}$$

$$A = \frac{9 \cdot 8}{2} = 36 \text{ cm}^2$$

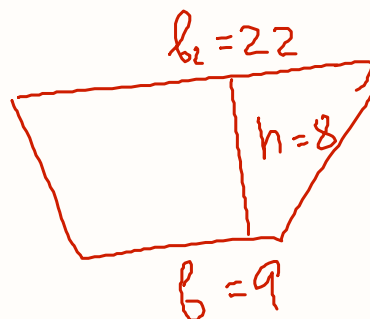
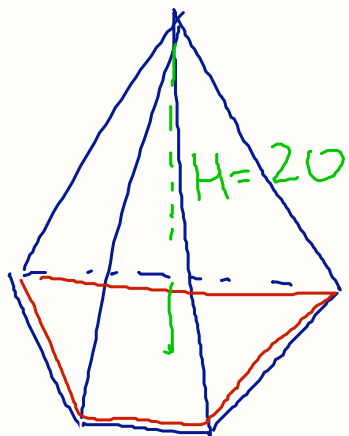
10e



$$V = \frac{1}{3} \cdot b \cdot h \cdot H$$

$$V = \frac{9 \cdot 8 \cdot 20}{3}$$

$$V = 480 \text{ cm}^3$$



$$V = \frac{1}{3} \cdot 124 \cdot 20$$

$$\frac{2480}{3}$$

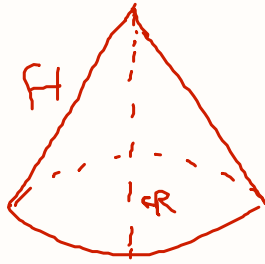
$$826.6 \text{ cm}^3$$

$$A = \frac{1}{2} h (b + b_2)$$

$$A = \frac{1}{2} 8 (9 + 22)$$

$$A = \frac{1}{2} 8 (31)$$

$$A = \frac{8(31)}{2} = \frac{248}{2} = 124$$



$$V = \frac{1}{3} \pi r^2 h$$

$$\frac{1}{3} \pi 3^2 \cdot 20$$

$$\frac{1}{3} \pi 9 \cdot 20$$

$$\frac{1}{3} \pi \cdot \frac{180}{3}$$

$$60\pi \text{ cm}^3$$